



ML500G Advanced 4G Asset GNSS Tracker

The MiCODUS ML500G asset tracker is designed specially for easy installation and long battery life demand. Its backup 5000mAh large and rechargeable battery allows the product to operate for around 10 days if providing location updates in ten-minute intervals. With 6pcs built-in powerful magnets it can be installed on metal surface easily.

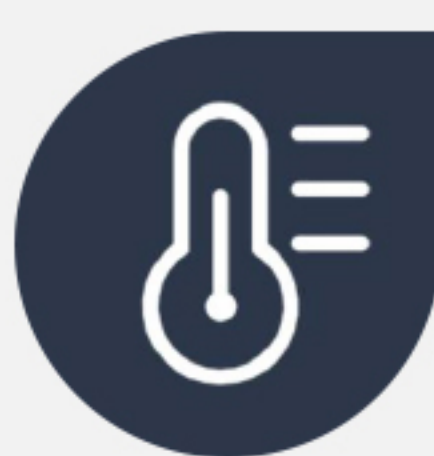
Besides, ML500G also has many useful features for fleet management and security monitoring.

6.07oz(172g)



85(L) x 49(W) x 30(H)mm

-20 degrees ~ 75 degrees



3.7v 5000mAh
Lion polymer battery



REGION

Worldwide

OPERATION BANDS

4G LTE CAT1: B1/B2/B3/B4/B5/B7/B8
/B12/B13/B18/B19/B20/B25/B26/B28
/B34/B38/B39/B40/B41/B66
2G GSM/GPRS: 850/900/1800/1900MHz

POSITION ACCURACY

GNSS Accuracy: <5 meters

CERTIFICATES

CE, FCC, RoHS

Applications



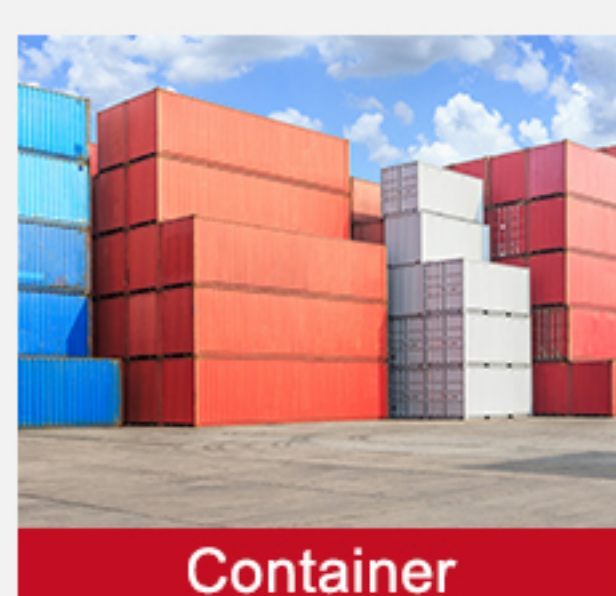
Private Car



Truck



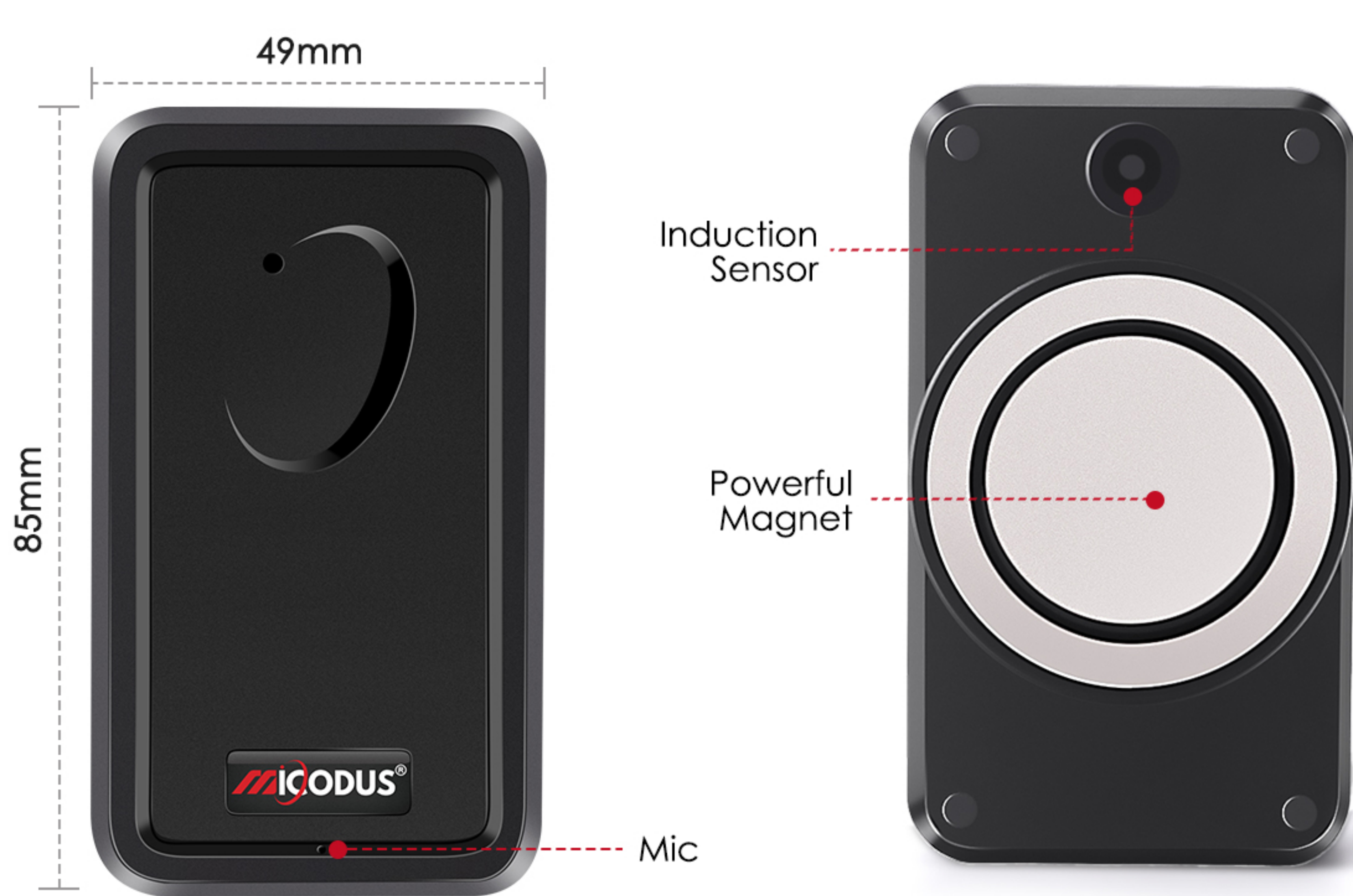
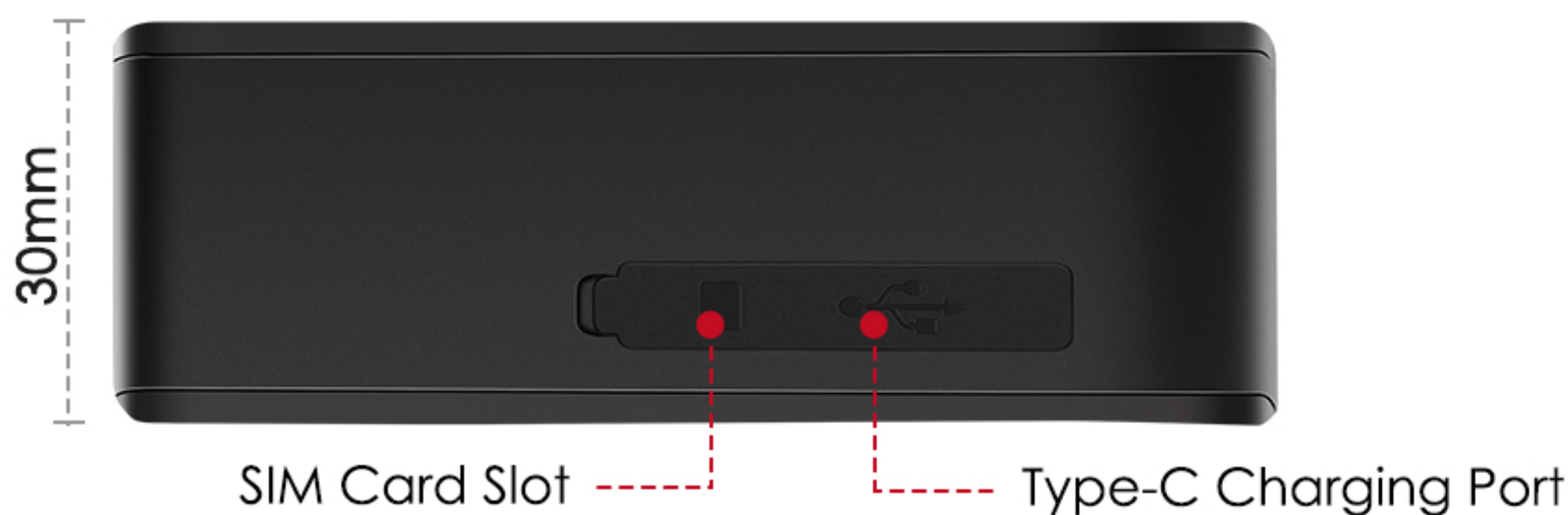
Taxi



Container



Trunk



Device Information	Model	ML500G
	Weight	172g
	Dimensions	85mm(L) * 49mm(W) * 30mm(H)
	Charging Time	Around 7 hours
	Battery Working Time	Tracking Mode, 1 minutes' reporting: 10 days
Working Parameters	Working Voltage	DC 3.4V - 4.5V
	Working Current	4V/Average 45mA
	Sleep Current	4V/less than 5mA
	Battery Capacity	3.7V 5000mAh Lion Polymer battery
	Working Temperature	-20°C - 75°C
GSM Specifications	Working Humidity	10%-85%RH non-condensing
	Working Frequency	4G LTE+2G GSM
	SIM Card	Micro SIM Card
GPS Specifications	GSM Antenna	Built-in
	Positioning Type	GPS+BEIDOU+LBS
	GPS Antenna	Built-in
	Cold Start	≤32 Seconds
	Hot Start	≤1 Second
	Tracking sensitivity	-162 dBm
	GPS Channels	64
Temperature Sensor	Position Accuracy	5-10m
	Scope	40°C to 125°C
External Interface	Accuracy	±1°C
	Microphone, Light Sensor, Temperature Sensor	