

Contents

1. Sign in.....	2
1.1 How to sign in a terminal user account.....	2
1.2 How to add device to your account.....	3
2. APP function and parameter bar.....	4
2.1 Home.....	4
2.2 Parameter Bar.....	5
2.3 List.....	6
2.4 Track.....	7
2.5 Route.....	8
3. Master Account.....	9
3.1 How to create a master account.....	9
3.2 How to create a terminal account in the master account.....	10
3.3 How to add device to a terminal account in the master account.....	11
3.4 How to reset the password of the terminal account.....	12
4. How to create Geo-fence.....	13
5. How to customize alert and notification options.....	14
6. Top up Spionlink SIM Card.....	15
7. Download instructions, SMS commands and protocols.....	16
8. Fine the FAQ.....	16

1. Sign In

1.1 How to sign in a terminal user account ?

IMEI/ID

1 Username

Username

Password

Login

Remember Me [Forgot Password](#)

AMap

2 Sign Up Demo

Tap **Username - Sign up**

Take a few minutes to sign up:

- ① Fill in with your Email address
- ② Tap **Get verification code**, apply Verification Code
- ③ Input the code, create your password (Ex:2019GPStracker)

< Sign Up >

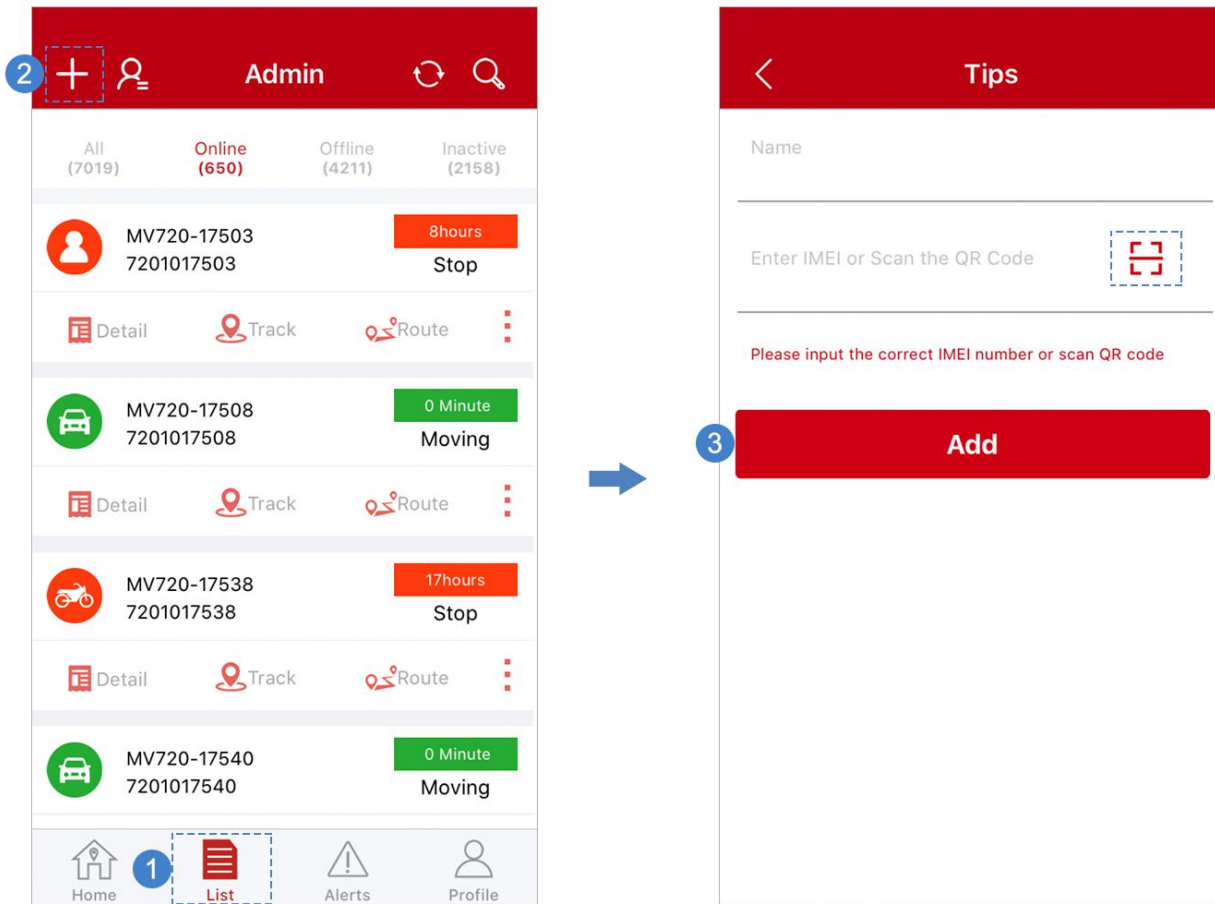
E-mail


Verification code **Get verification code**

New password

Submit

1.2 How to add device to your account ?

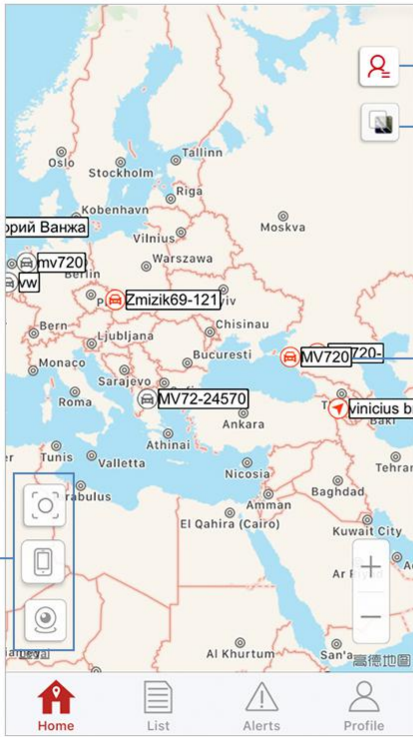


List -  - enter device nickname - scan device bar code or just enter it

2. APP Function and Parameter Bar

2.1

Home




Go to users and devices list

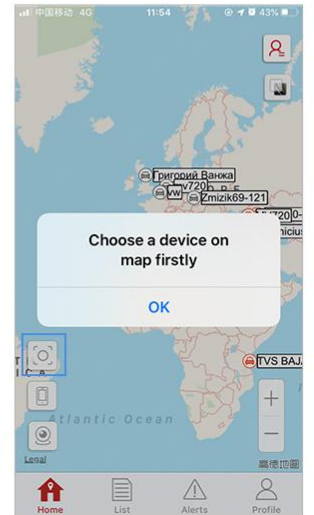
Switch to satellite map


Choose a device to look over its detail parameters.

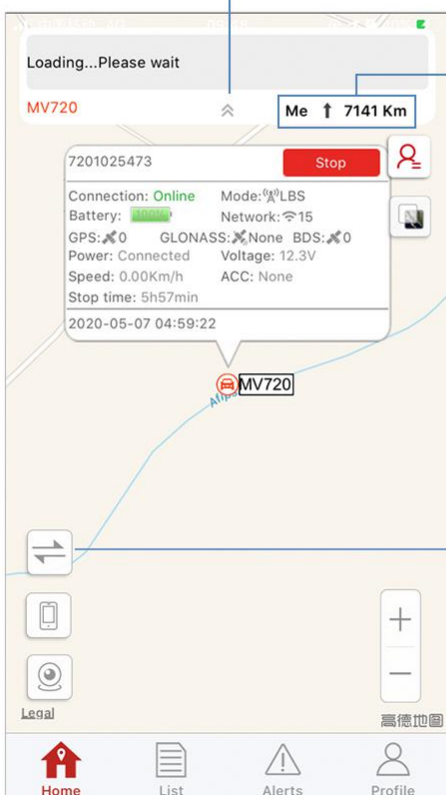
Zoom in the chosen device real-time location on the map.
Tips: Zoom-in function requires to select a device on map first.


Tap  and the blue point means your phone location.

Switch to the view of all device.



 **Tips: Zoom-in function requires to select a device on map first.**




Click  to pick up or open the address bar.

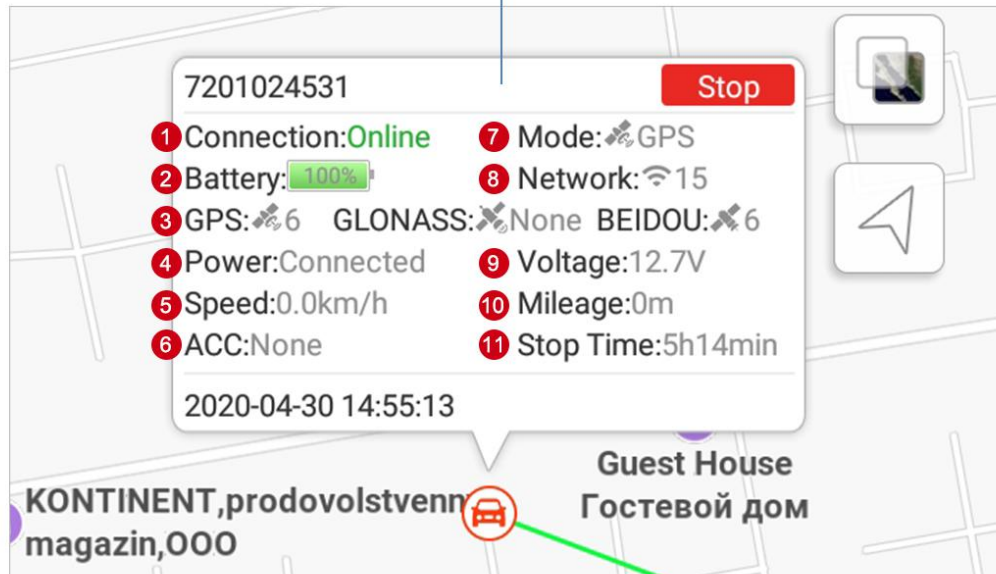
The device is located in the north of me, 7141km away.

Tips: This feature ask for phone location access permission, you can allow it by the phone Setting.

Click  to track next device.


2.2 Parameter bar

Tap the parameter bar to close it, click the  icon to open it.



1 The device is online and stand by to receive the control commands.

2 Device battery

3 It is receiving signals from 6 GPS and 6 Beidou satellites. The bigger the number, the higher the accuracy. (GLONASS: None) means that device nonsupport GLONASS.

4 External power supply is connected well.

5 When device is in moving status, here shows a real-time speed.

6 ACC status (None means that device doesn't have ACC detection function)

7 Now it's GPS mode

8 In current mode, the signals score is 15. The bigger the number, the stronger the signal.

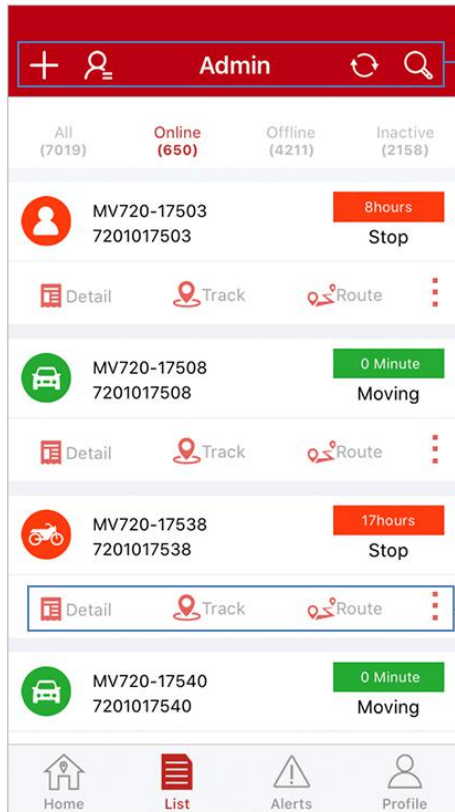
9 Real-time voltage of the car

10 Mileage starts counting the distance that a vehicle has travelled when you get into this page, measured in meters. Just for reference only.

11 The time since the last moving status

2.3

List



+ Add device

👤 Jump to user list

Admin Here shows the nickname you set

🔄 Tap to refresh this page

🔍 Search device

📄 Look through device detail information and set nickname

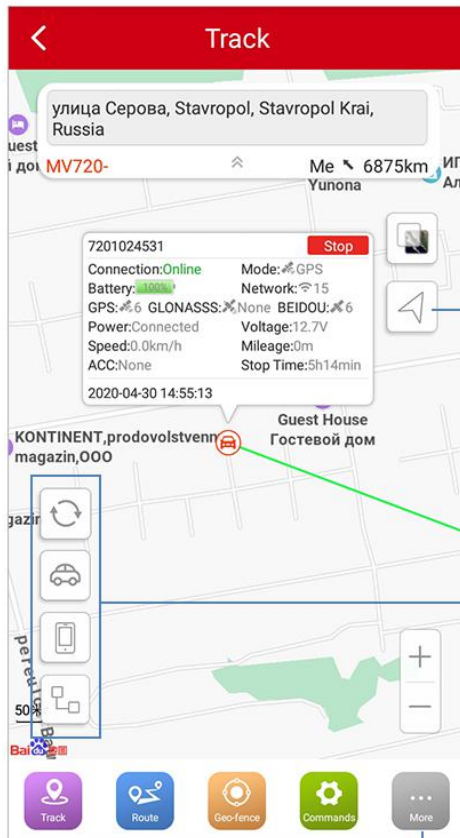
📍 Tracking device on the map

📍 Review the historical route

⋮ Go to setting more


2.4


Track




Go to the navigation APP

Tap  to refresh the location

Tap  to get device location on the map

Tap  and the blue point means your phone location.

Tap  and the line means the distance between your phone and the car.

Go to setting more

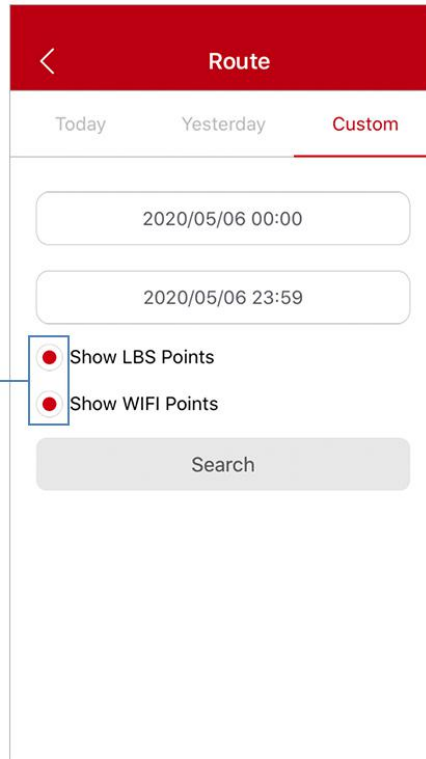
2.5

Route

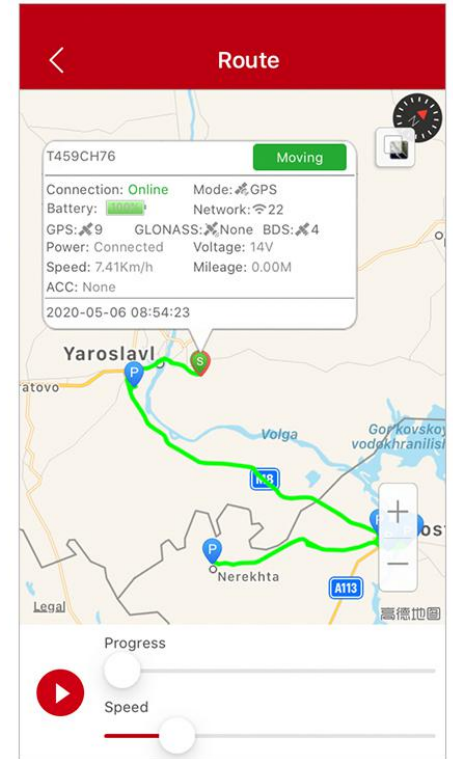
Save or filter out LBS/WIFI positioning data.



Tips: LBS positioning accuracy is 100–1000m, which might cause a remarkable discrepancy. Filter out LBS data could get a more reliable history route.



The app could only check **1** day route.
If you need 3 months route, go to <http://micodus.net>



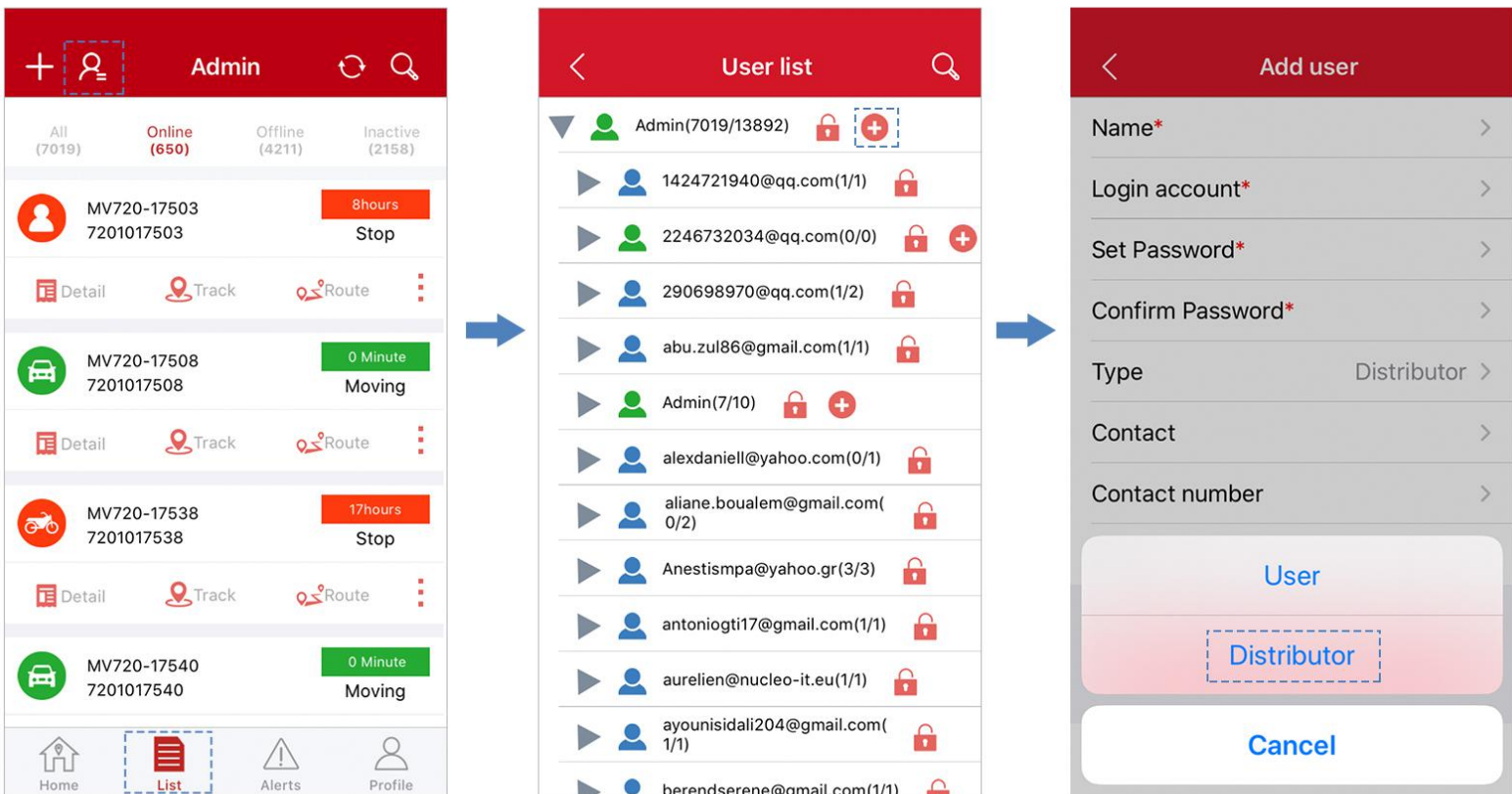
Taping shows you the route of your vehicle(s) in the past with a **dynamic view**.

3. Master Account

For car rental company and other business enterprise, by using master account, you can invite your fleet members to join in and have access to specific parts.

3.1 How to create a master account?

1) If you have a master account already, it's very easy to create a new master account by yourself.



List - - choose a master account - tap - Choose **Distributor** Type and complete the form

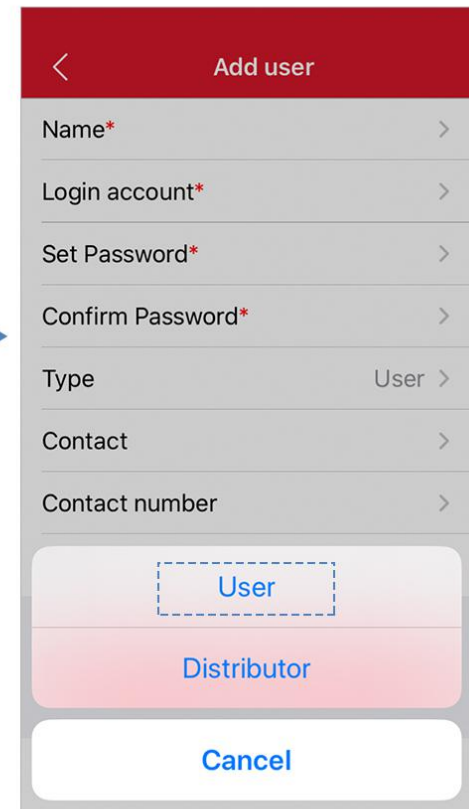
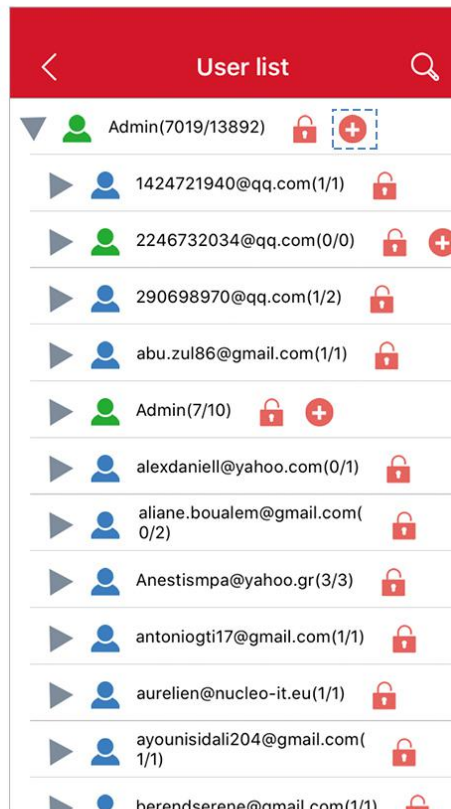
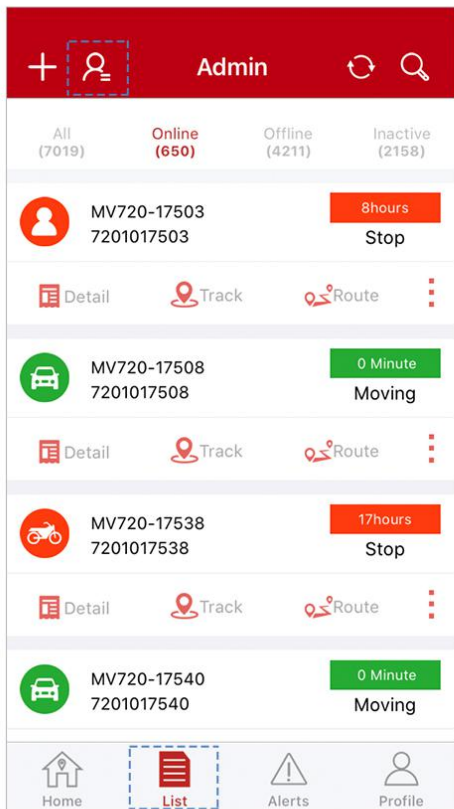
Tips:

Green icon represents master account

Blue icon represents sub-accounts (also terminal user account)

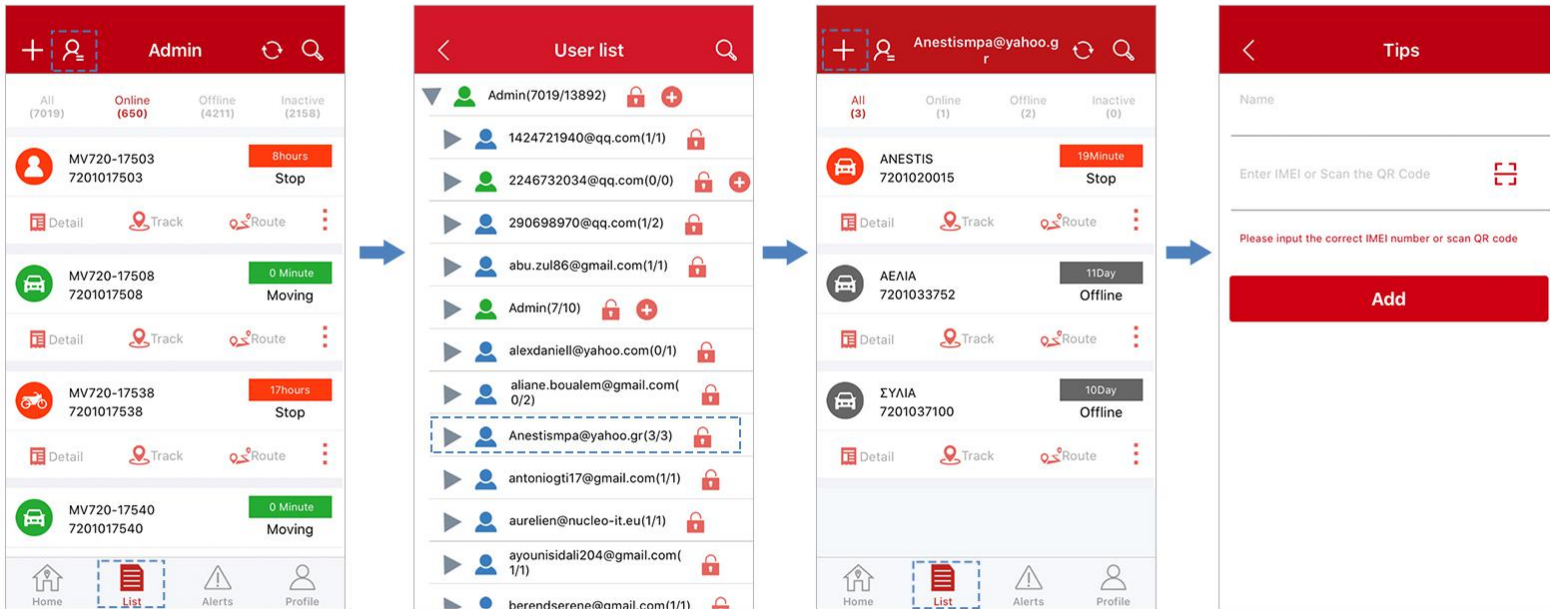
2) But if you don't have a master account, you can just ask for your seller to create it, or contact to us: support@micodus.com

3.2 How to create a sub-account in the master account?



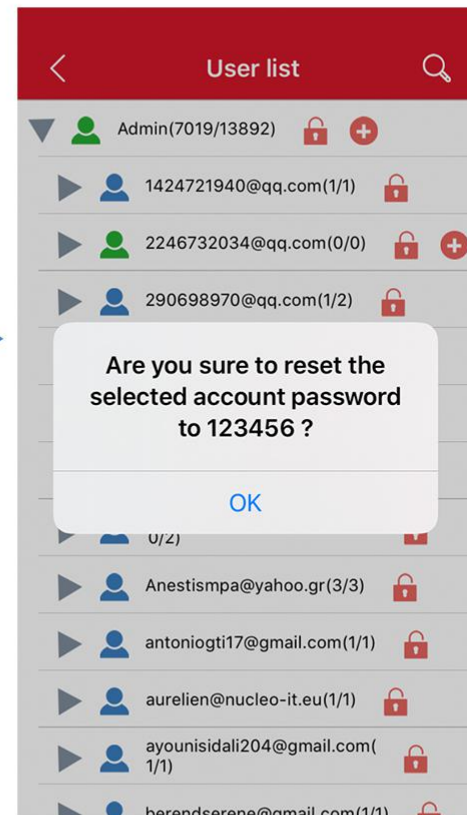
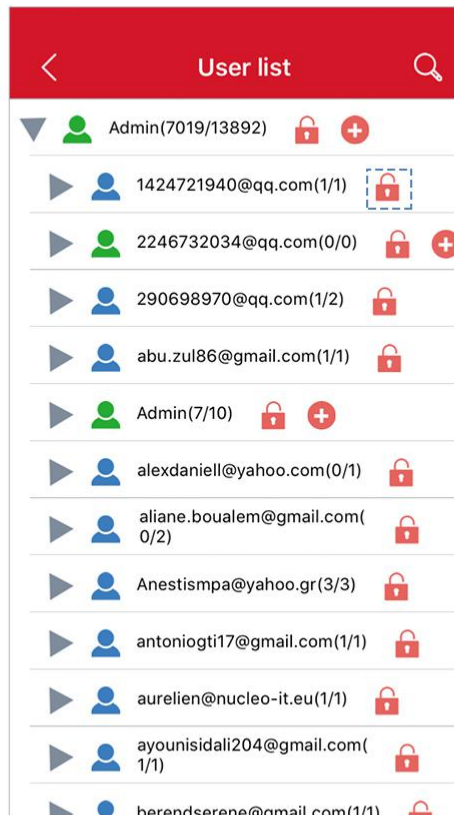
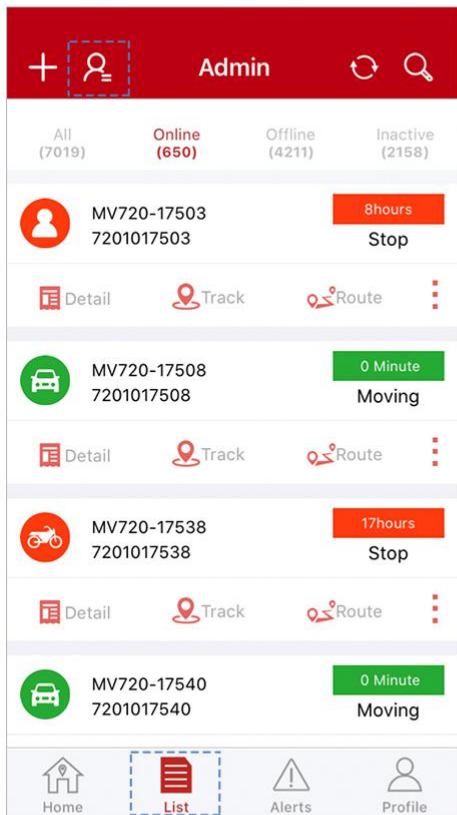
List -  - choose a master account - tap  - Choose **User** Type and complete the form

3.3 How to add device to a terminal account in the master account?



List - - choose a terminal account - - enter device nickname - scan device bar code

3.4 How to reset the password of the terminal account



List -  - choose a terminal account -  - reset to the default password 123456

4. How to Create Geo-fence

Set up geo fences around the place that you visit most, and allows you to receive notifications any time the device comes or goes. Best of all, it could be setting 20 Geo-fences at a time.

WAY 1 : Go to **"List"** - tap **Geo-fence**

- 1. Drag** around the map and then use the sliding bar to **adjust** the Geofence size.
- Give it a name, then hit the **Submit** button at the bottom.

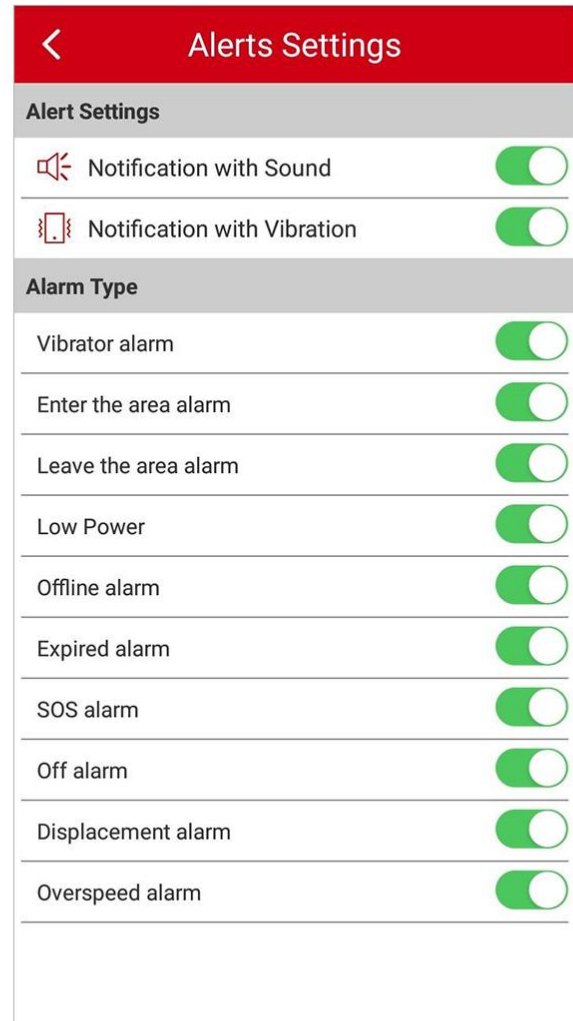
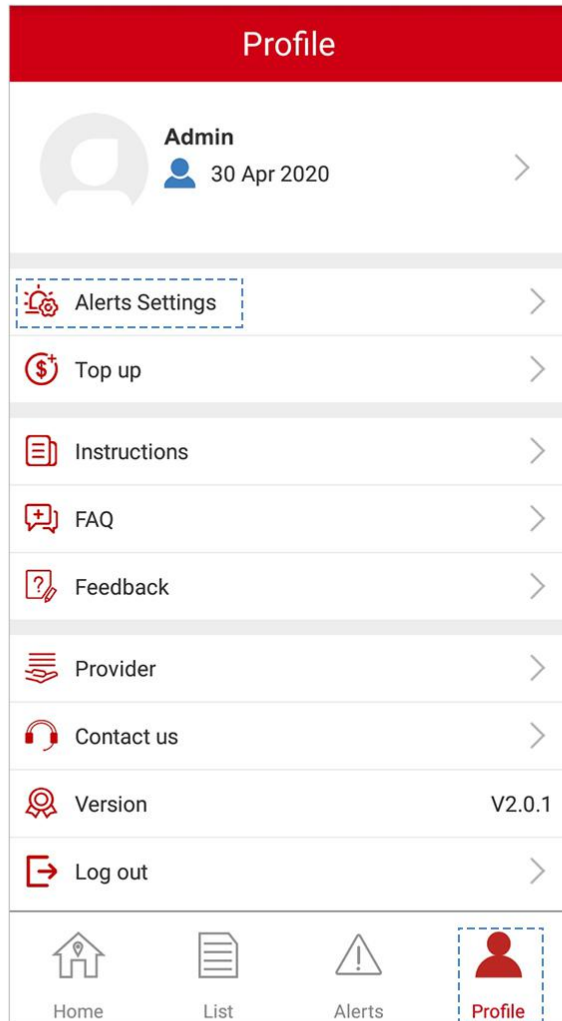
If you set Geo-fences already, you'll see them here. Tap "+" to add a new one.

WAY 2 : Go to **"List"** - tap **Track** - **Geo-fence**

- 1. Drag** around the map and then use the sliding bar to **adjust** the Geofence size.
- Give it a name, then hit the **Submit** button at the bottom.

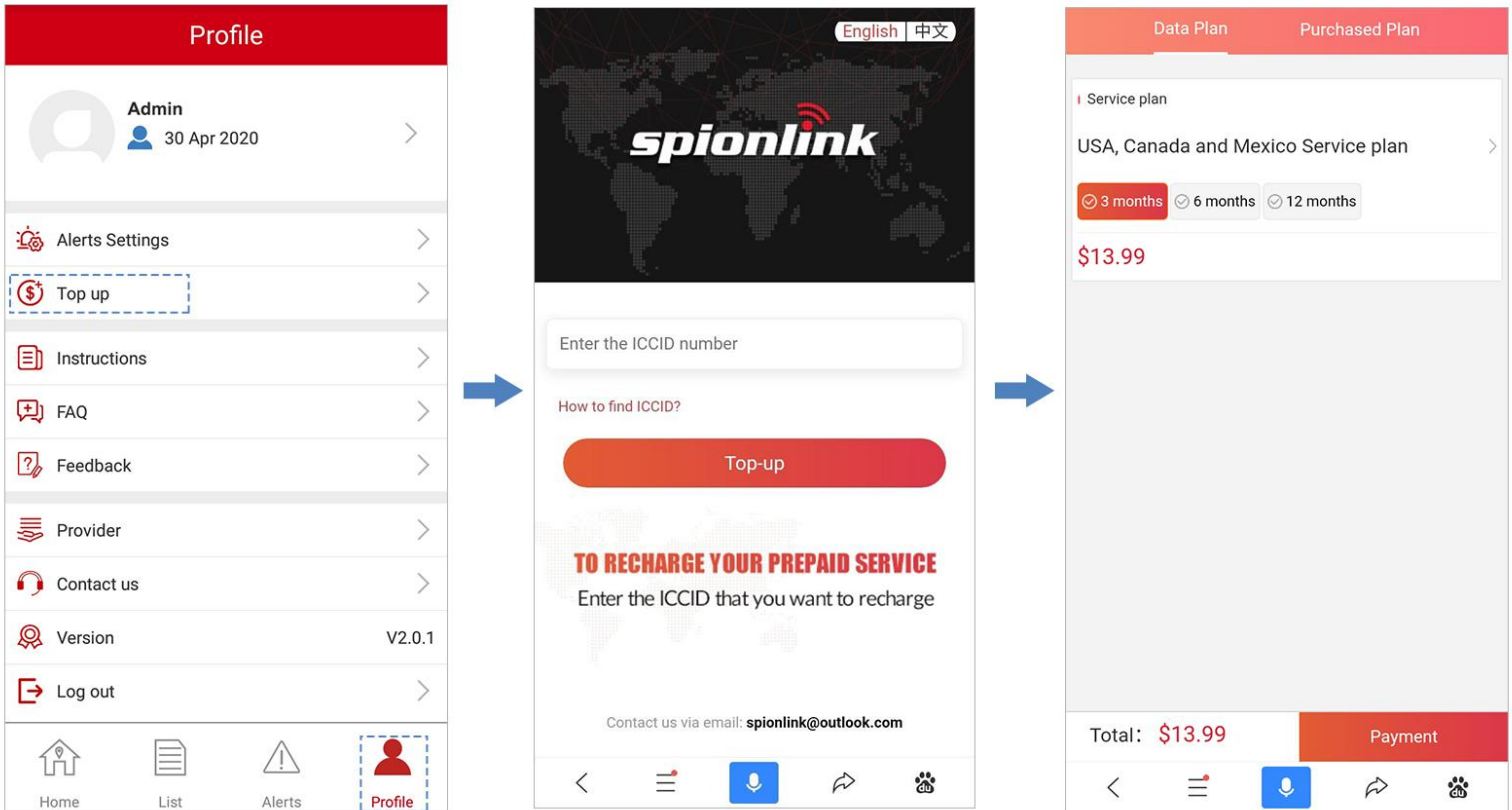
If you set Geo-fences already, you'll see them here. Tap "+" to add a new one.

5. How to Customize Alert and Notification Options?



Profile - Alerts settings

6. How to Top-up Spionlink SIM Card?



Profile - Top up - enter ICCID- choose data plan - checkout

 **Tips: Where to find ICCID?**



Download instructions, SMS commands and protocols

Fine the FAQ

Share your feedback and ideas about MiCODUS APP,
your idea means a lot to us!

Contact us to solve the product problem, make a order,
get a coupon... We will always here to listen to you.

